



RETURN TO WORK / SCHOOL SAFETY PROGRAM

DESIGNED & MANAGED BY PHYSICIANS



WELLNESS PROGRAM SERVICES

Wellness Benefits within the Health Platform include

Initial Health Screening

Self-assessment
Biometric Screening, DNA Screening
On-line tracking

Telemedicine

24/7 Access
\$0 copay

Multi-channel Coaching

On-line
Telephonic

Covid-19 Mitigation Services

Incoming shift temperature screenings
Medical risk assessment Q&A
PPE analysis and provided for each employee
Covid-19 Saliva-Based PCR Test

Wholeistic™ Coaching And Confidential Support Assistance

Licensed RN Health Coaches
SMART Goals
Nutrition Education
Weight Management
Disease Management
Behavior Change Counseling
On-Going Screening
Health Advocacy
Smoking Cessation
Medical Procedure Pricing
Work Shield



Designed to improve
employee engagement to
drive healthier lifestyles
and potentially reduce
healthcare costs.

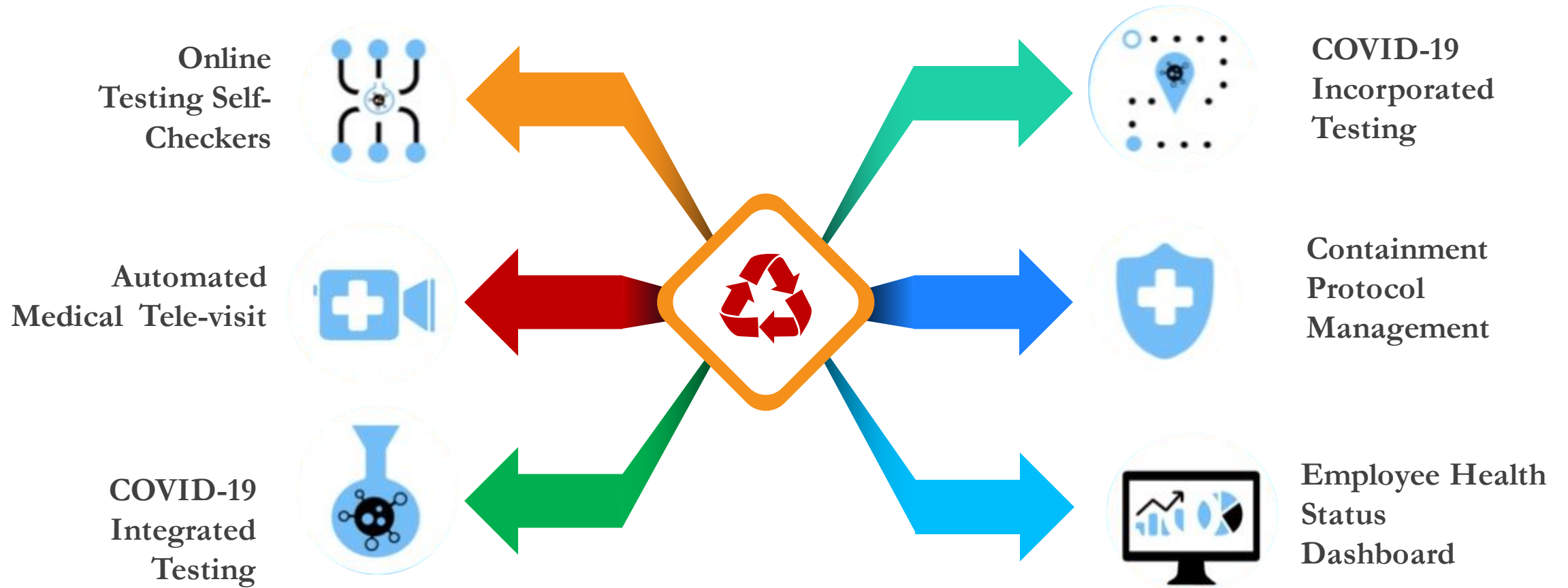
Doctor Designed. Data Driven. Doctor Managed.



A robust, end-to-end, turn-key solution.

Renowned cardiologist, Dr. Steven Schnur, in collaboration with several national leading infectious disease specialists, has developed a comprehensive back-to-work/back-to-school monitoring program to ensure safe and healthy work and school environments.

TURN-KEY SOLUTION

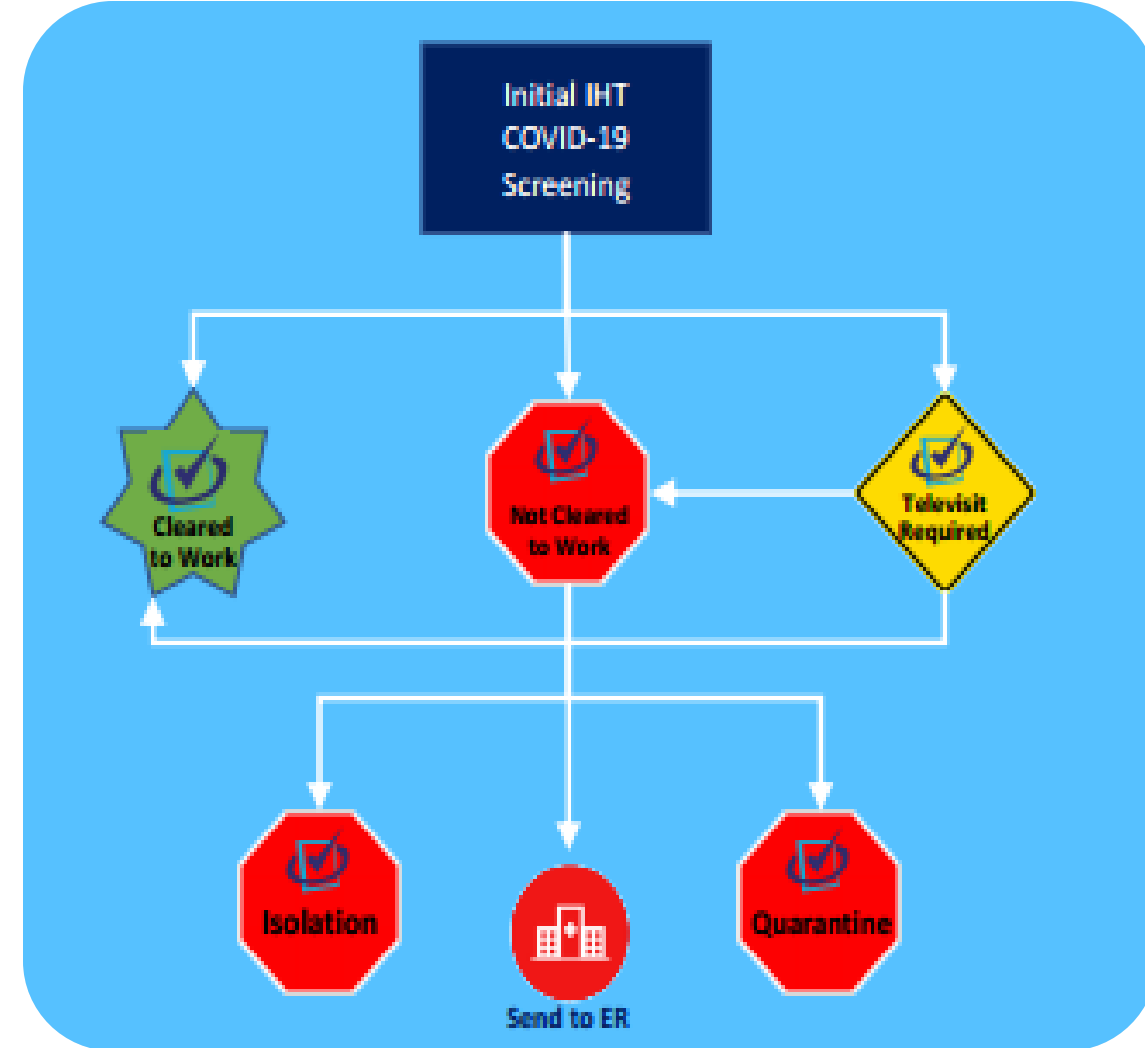


INITIAL SCREENING WORKFLOW – CREATING A BASELINE

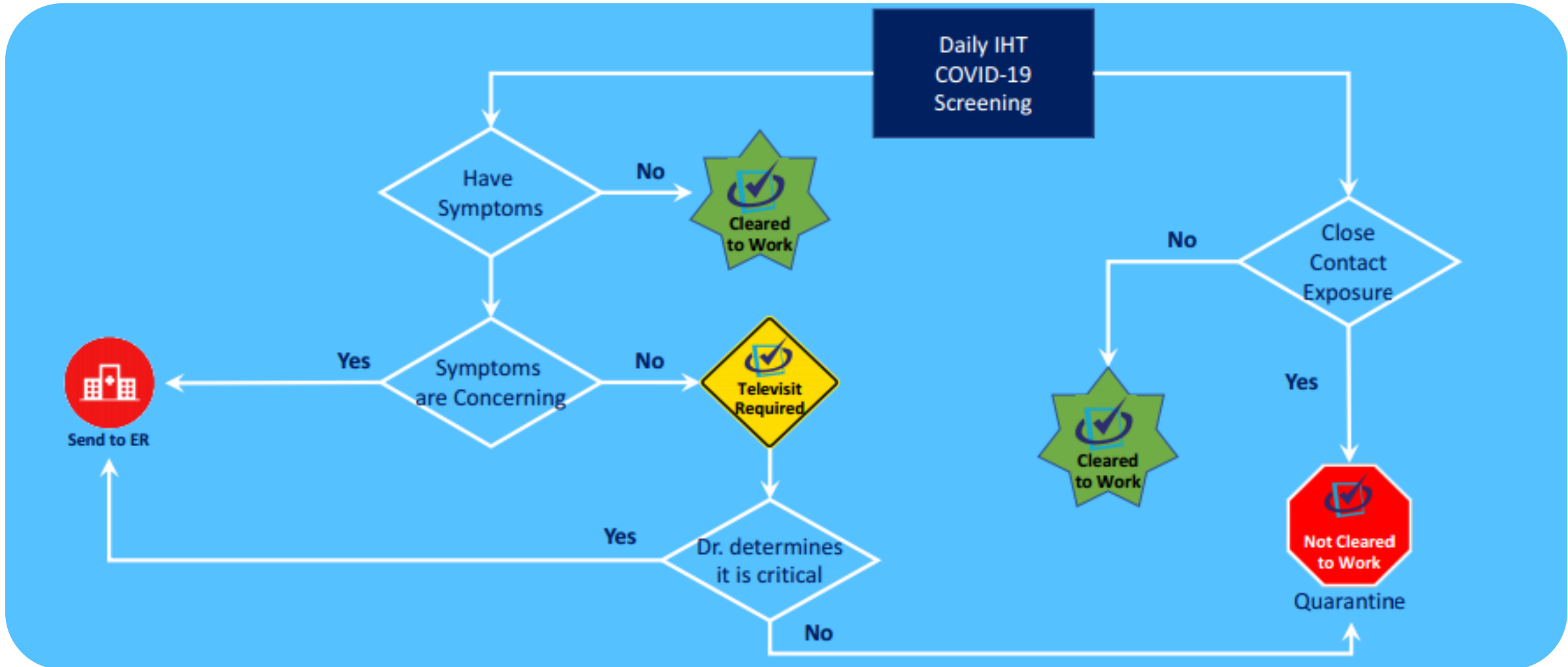
All members take an initial screening questionnaire to determine if they are likely to have COVID-19.

From that initial screening they fall into one of three categories:

1. **GREEN:** Cleared for work/school.
2. **RED:** Not cleared for work/school.
3. **YELLOW:** Tele-visit required to determine if they are cleared or not.



DAILY SCREENING – KEEPING EVERYONE SAFE



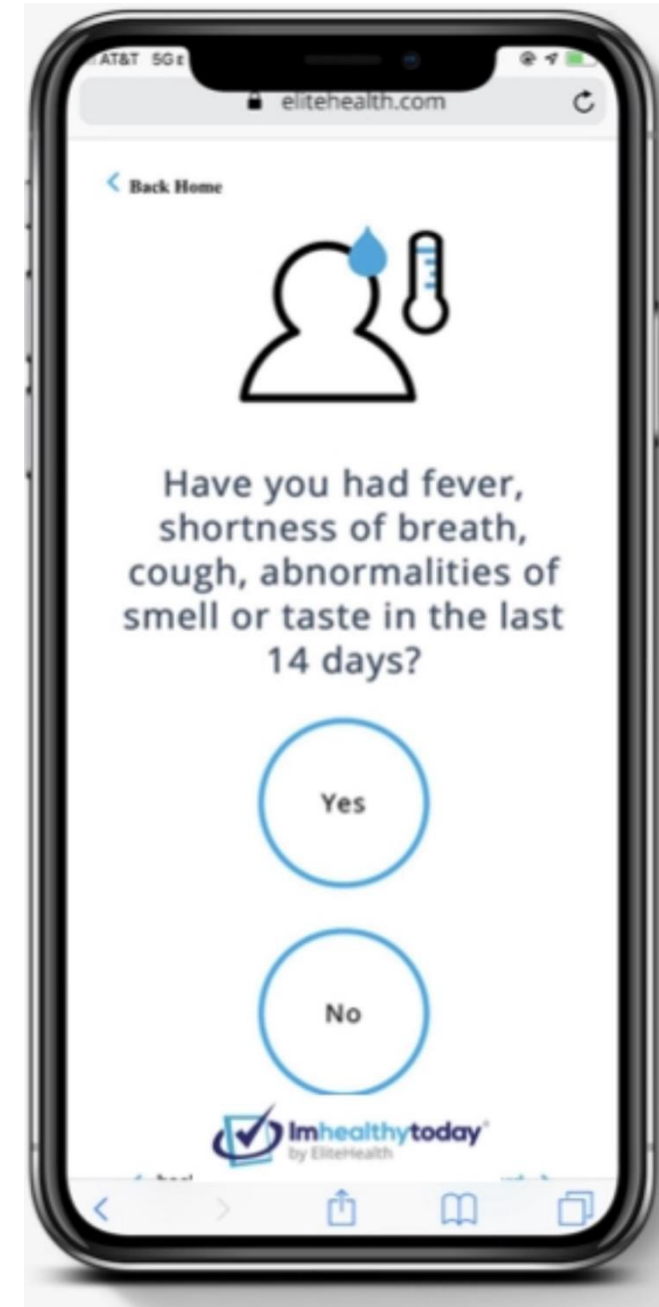


INITIAL SELF-CHECKER

Our Initial self-checker is a comprehensive screening to determine whether a employee a COVID-19 patient since yesterday?

Returning to work meets the criteria to be cleared or if they will require COVID-19 testing to determine if they are cleared to return to work.

Simple, precise and easy to implement.





DAILY SELF-CHECKER

Our **daily-checker** allows employees to self-report daily ensuring they are cleared to be at their workplace safely every day.

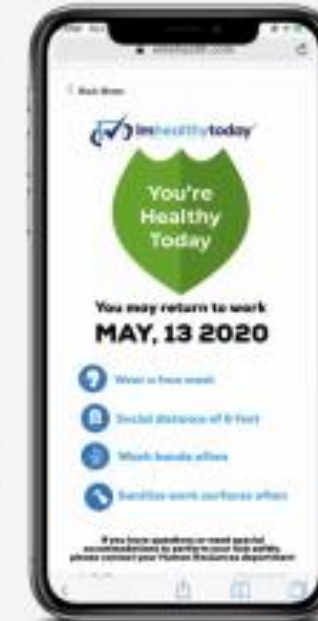
The results of this daily screening will generate a green light if the employee is cleared to go back to work, a yellow light if the employee needs to stay home to receive an automated medical televisit to determine if they are cleared or need testing.

All results are conveniently texted to their cell phones allowing the phone screen to be a credential to show clearance at the workplace point of entry.

Automated Televisits



Clearance



Integrated COVID-19 Testing





AI-BASED SCREENING ALGORITHMS

Our program includes an AI-based Initial Self-Checking and Daily Screening algorithms to comprehensively analyze and determine if an employee is cleared to work, or if they should be quarantined, tested, and contact traced.

Symptom escalation to a televisit, contact tracing, and COVID-19 testing workflows are automatically coordinated through our best-in-class program.

All Covid-19 tests, lab work, doctor consults and contact tracing are included services of this program.





INTEGRATED TELE-VISITS

Our interactive app includes a self-checker which is integrated with automated tele-visits.

Our national team of board-certified physicians are ready to assist when results indicate a member needs help to determine if they are cleared to return to work or if they need COVID-19 testing.

Our medical professionals are ready and available for your employees 24/7, whenever you need us most.





INTEGRATED COVID-19 TESTING

Best-in-class, Non-invasive, Saliva-based, FDA Approved Testing Method.

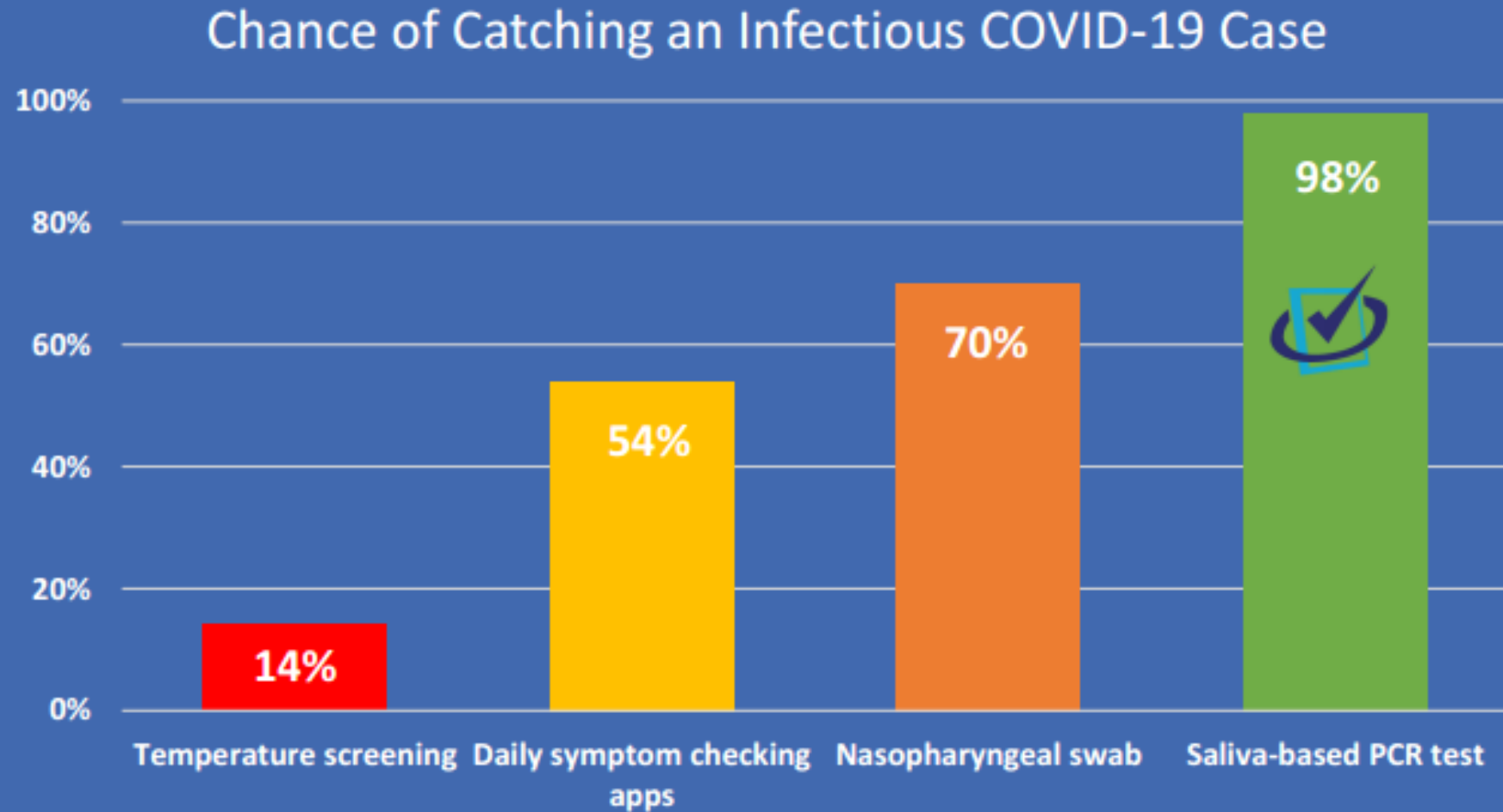
Non-invasive. The nasal swabbing testing method is an extremely uncomfortable experience that requires someone with medical training to properly administer the test. On children or young adults, this often results in much higher false negative results.

More Accurate. The more common nasopharyngeal swabs can have a false negative rate in the 25% to 35% range. Imhealthytoday's saliva testing method has only a 2% false negative rate.

Fast. Our partnership with top certified labs allow us to overnight tests for home collection offering results within 24 to 48 hours from lab sample receipt.



TESTING ACCURACY





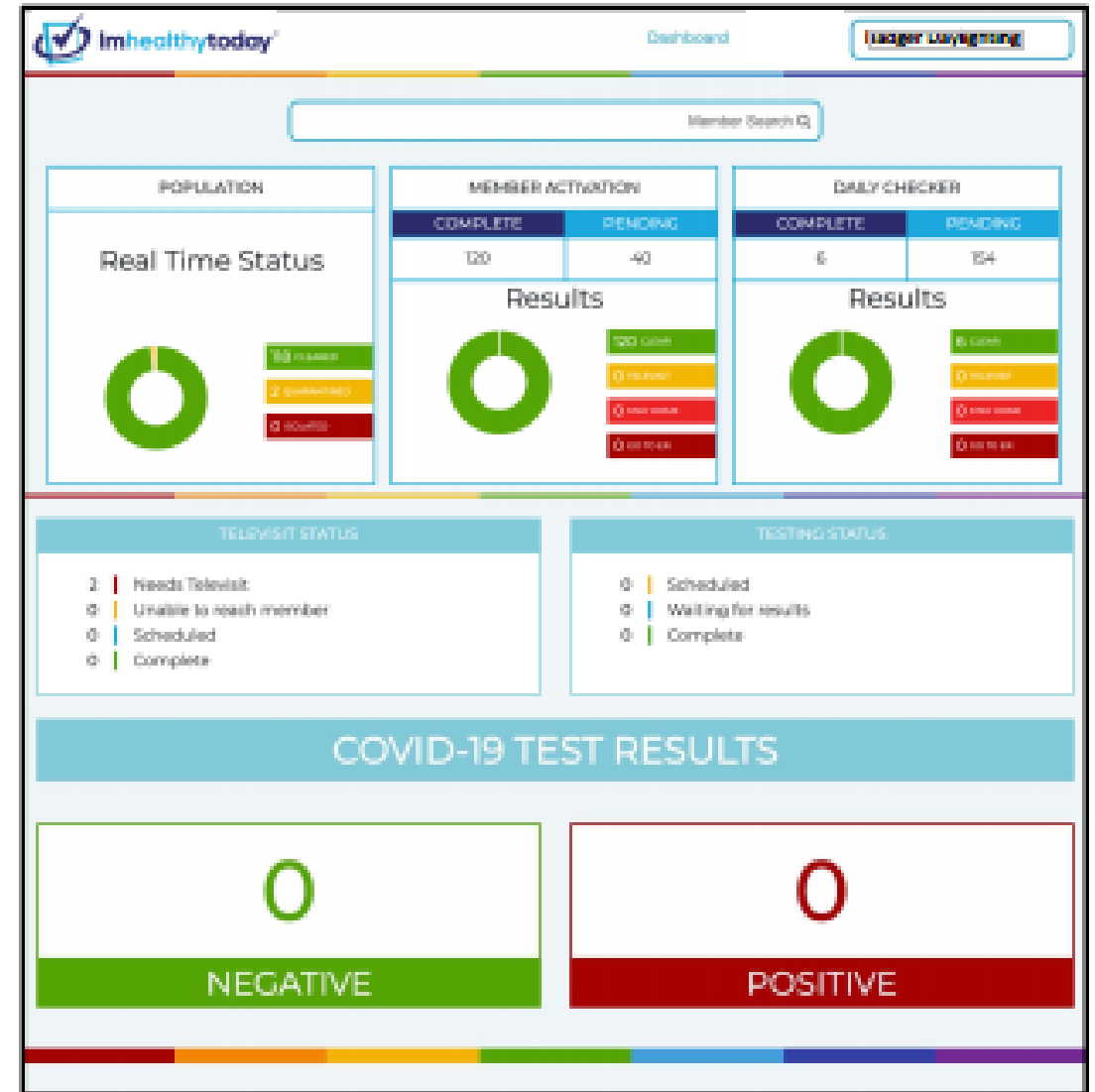
CLIENT UTILIZATION DASHBOARD

Valuable data and insights

A true asset to your Human Resources team. Actionable data to monitor your team at your fingertips in real-time.

Keep your workforce, teachers, students and your customers safe.

NOTE: There will be no non COVID-19 health- related information available through the Employer Dashboard. All HIPPA guidelines are adhered to.





Add'l Containment Tools & Protocols

Our return to work / school program includes wearable devices that use advanced Bluetooth Low Energy (BLE) technology, detecting each other within six feet and storing encrypted contact time and duration information on the device.

Should an employee test positive for Covid-19, our AI will automatically contact trace those employees within the CDC recommended guidance for distance and duration to be tested themselves.

Wearable devices include a selection of key cards, bracelets and pocket devices.

Optional: Contact Tracing Technology





CONTACT TRACING

Contact Tracing

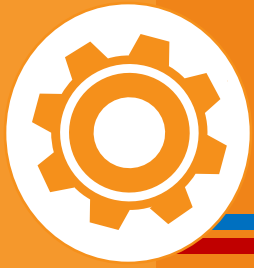
Our Return to Work / School program offers a 360 approach to safety, focusing not only on testing, but also on contact tracing. Our contact tracing investigators assist by contacting everyone who was in close contact with a COVID-19 positive case following CDC guidelines.

If Bluetooth wearable devices are being utilized, our AI technology will run this program based on the CDC's most current recommendations for US businesses.

Diagram showing a central node (30) connected to nodes 56 and 58, with a line connecting 56 and 58.

| Case Investigation | | | | | |
|--|-------------|----------------------------------|-------------|--|-----------------------|
| Investigator | Name | | | Date Assigned for Investigation | Date |
| Patient Last Name | Open Text | Patient First Name | Open Text | Primary Language | Open Text/Categorical |
| Patient Preferred Name | Open Text | Residential Street Address | Open Text | City of Residence | Open Text |
| DOB | Date | County of Residence | Open Text | State of Residence | Open Text |
| Gender | Categorical | | | Zip code | Numeric |
| Phone Number | Numeric | Ok to Text | Categorical | | |
| Email | Open Text | Ok to Email | Categorical | | |
| Date of interview Attempt 1 | Date | Interview 1 occurred | Categorical | | |
| <u>Symptoms and Clinical Course</u> | | | | Date of symptom onset | Date |
| Fever | Categorical | Shortness of Breath | Categorical | Vomiting | Categorical |
| Cough | Categorical | Diarrhea/GI | Categorical | Abdominal Pain | Categorical |
| Headache | Categorical | Loss of sense of taste | Categorical | Nasal congestion | Categorical |
| Muscle ache | Categorical | Malaise | Categorical | Loss of sense of smell | Categorical |
| Chills | Categorical | Sore throat | Categorical | Fatigue | Categorical |
| Other symptom | Categorical | Other symptom description | Open Text | | |
| SARS-CoV-2 testing | Categorical | Results of first SARS-CoV-2 test | Categorical | Date of first SARS-CoV-2 test | Date |
| Date of last SARS-CoV-2 test | Date | Results of last SARS-CoV-2 test | Categorical | | |
| Hospitalized | Categorical | Pneumonia | Categorical | MI | Categorical |
| ECMO | Categorical | ICU | Categorical | Stroke | Categorical |
| Death | Categorical | | | | |
| <u>Pre-existing conditions</u> | | | | | |
| Chronic lung disease | Categorical | Chronic renal disease | Categorical | Severe Obesity (BMI>=40) | Categorical |
| Diabetes | Categorical | Chronic liver disease | Categorical | CVD | Categorical |
| Immunocompromised | Categorical | Pregnant (if Female) | Categorical | | |
| <u>Risk Factors</u> | | | | | |
| Contact with confirmed COVID case | Categorical | Occupation | Open text | What kind of workplace | Open text |
| <u>Contact Tracing (during contact elicitation window)</u> | | | | | |
| Any Workplace Contacts | Categorical | | | Total Number of household contacts | Numeric |
| Listing of workplace close contacts (15 min or greater) | Name 1 | Name 2 | Name 3 | Name 4 | |
| Can you self-isolate | Categorical | | | Do you need assistance to self-isolate | Categorical |
| <u>Isolation update notes</u> | | Week 1 | | Week 2 | |

Diagram showing a central node (54) connected to nodes 51, 26, and 22.



Add'l Containment Tools & Protocols

To ensure safety, visitors too can participate in your Covid-19 Safety Program. We provide a self-checker for visitors that they receive via email or text on their cell phones.

After answering the short questionnaire, according to their answers, visitors will receive a time-stamped text showing a badge with clearance or they will be advised they cannot access the premises and to contact their physician for further assistance.

VISITOR PROGRAM





SAFETY TOOL SOURCING

We work tirelessly to leverage our resources, relationships, and products to protect our clients and help them navigate this crisis.

Program provided PPE includes infrared employee/customer temperature control stations with sanitizer dispenser and upload feature to employer dashboard for tracking employee compliance with entry into the workplace.

Should an employee have a fever, a video chat with a live doctor will be prompted and a test provided for results in under 24 hours.

For a complete list of included PPE, please contact 813-469-5326



Microbiostatic
Sanitizer



Antimicrobial
Mask



Protected Facility
Signage and PPE
refills



Infrared
Temperature
Screening



COMPLIANCE

Turn-key solution

To comply with CDC safety recommendations, businesses are required to provide daily monitoring procedures of their employees to check for signs and symptoms of Covid-19.

Return to Work/ School is a turn-key solution for safety and compliance that includes medical supervision, daily screenings, and COVID-19 testing.

There is no out-of-pocket expense to the employer or their employees for our program. Full expense is recovered by employer via government tax credits administered by the program.

WORKPLACES DURING THE COVID-19 PANDEMIC



The purpose of this tool is to assist employers in making (re)opening decisions during the COVID-19 pandemic, especially to protect vulnerable workers. It is important to check with state and local health officials and other partners to determine the most appropriate actions while adjusting to meet the unique needs and circumstances of the local community.

Should you consider opening?

- ✓ Will reopening be consistent with applicable state and local orders?
- ✓ Are you ready to protect employees at higher risk for severe illness?

ALL YES

ANY NO

DO NOT OPEN

Are recommended health and safety actions in place?

- ✓ Promote healthy hygiene practices such as hand washing and employees wearing a cloth face covering, as feasible
- ✓ Intensify cleaning, disinfection, and ventilation
- ✓ Encourage social distancing and enhance spacing between employees, including through physical barriers, changing layout of workspaces, encouraging telework, closing or limiting access to communal spaces, staggering shifts and breaks, and limiting large events, when and where feasible
- ✓ Consider modifying travel and commuting practices. Promote telework for employees who do not live in the local area, if feasible.
- ✓ Train all employees on health and safety protocols

ALL YES

ANY NO

MEET SAFEGUARDS FIRST

Is ongoing monitoring in place?

- ✓ Develop and implement procedures to check for signs and symptoms of employees daily upon arrival, as feasible
- ✓ Encourage anyone who is sick to stay home
- ✓ Plan for if an employee gets sick
- ✓ Regularly communicate and monitor developments with local authorities and employees
- ✓ Monitor employee absences and have flexible leave policies and practices
- ✓ Be ready to consult with the local health authorities if there are cases in the facility or an increase in cases in the local area

ALL YES

ANY NO

MEET SAFEGUARDS FIRST

ALL YES

OPEN AND MONITOR



cdc.gov/coronavirus



CONTAINMENT COLLATERAL & SIGNAGE

Our Return to Work / School program includes pre-designed safety collateral in all sizes to display at the workplace or school to assist with reinforcing compliance as well as communicating to your customers and parents that your organization is a safe place to work.

There are more than 100 available marketing/display pieces to be utilized for your specific industry needs.

Template SOP's are provided by industry to promote best practices and safety for all employees.

HOW TO SAFELY WEAR AND TAKE OFF A CLOTH FACE COVERING

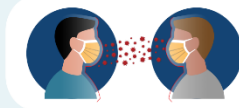
WEAR YOUR CLOTH FACE COVERING CORRECTLY

- Wash your hands before putting on your cloth face covering
- Put it over your nose and mouth and secure it under your chin
- Try to fit it snugly against the sides of your face
- Make sure you can breathe easily
- Do not place a mask on a child younger than 2



USE THE FACE COVERING TO PROTECT YOURSELF AND OTHERS

- Wear a cloth face covering to protect yourself and others in case you're infected but don't have symptoms
- Keep the covering on your face the entire time you're in public
- Don't put the covering around your neck or up on your forehead
- Don't touch the face covering, and, if you do, clean your hands



FOLLOW EVERYDAY HEALTH HABITS

- Stay at least 6 feet away from others
- Avoid contact with people who are sick
- Wash your hands often, with soap and water, for at least 20 seconds each time
- Use hand sanitizer if soap and water are not available



TAKE OFF YOUR CLOTH FACE COVERING CAREFULLY, WHEN YOU'RE HOME

- Untie the strings behind your head or stretch the ear loops
- Handle only by the ear loops or ties
- Fold outside corners together
- Place covering in the washing machine
- Wash your hands with soap and water



FACE COVERING DO'S AND DON'TS

Do's:

- Make sure you can breathe through it
- Wear it whenever going out in public to work at or visit an essential business
- Make sure it covers your nose and mouth
- If cloth face covering, wash after using



Don'ts:

- Use if under two years old
- Use surgical masks or other PPE intended for healthcare workers



Persons working in or visiting grocery stores, restaurants, pharmacies, construction sites, public transit vehicles, vehicles for hire, and locations where social distancing measures are not possible shall wear facial coverings as defined by the CDC. A facial covering includes any covering which snugly covers the face and mouth, whether store bought or homemade, and which is secured with ties or ear loops.

Persons should not utilize N95 rated masks, as those are critical supplies for health care workers, police, fire, emergency management, or other persons engaged in life/safety activities. Persons who wear masks should review the CDC and Florida Department of Health guidelines regarding safely applying, removing, and cleaning masks. A mask shall not be required for children under two or persons who have trouble breathing due to a chronic pre-existing condition.

CORONAVIRUS (COVID-19) SAFETY ALERTS

ALERTAS DE SEGURIDAD POR EL CORONAVIRUS (COVID-19) • ALËT SEKRITË CORONAVIRUS (COVID-19)



KEEP IT CLEAN

MANTÉNGALO LIMPIO • KENBE LI PWŌ

Clean and disinfect workstations daily. Avoid using other employees' phones, desks or offices. If you have to share, be sure to clean and disinfect items after each use. Feeling sick? STAY HOME. Otherwise, you will be sent home.

• Limpie y desinfecte a diario los puestos de trabajo. Evite usar los teléfonos, escritorios u oficinas de otros empleados. Si tiene que compartir su puesto de trabajo, asegúrese de limpiar y desinfectar los artículos después de usarlos. ¿Se siente mal? QUÉDESE EN CASA. De lo contrario, se le pedirá irse para su casa.

• Netweye al desinfecte estasyon travay yo chak jor. Evite itilize telefon, bawo lot anplwaye. Si ou dwe pataye, asire w ke w netweye al desinfecte atik yo apre chak itilizasyon. Ou malat? RETE LAKAY OU. Sinon, yo ap voye w lakay ou.



The Imhealthytoday program is medically supervised and protects our workforce and our customers.

- ✓ EMPLOYEE DAILY SCREENINGS
- ✓ COVID-19 TESTING
- ✓ EMPLOYEE WELLNESS
- ✓ CONTACT TRACING

Imhealthytoday.org • (855) 806-3910 • info@imhealthytoday.org



COVID-19 SAFE RETURN PROGRAM

DESIGNED & MANAGED BY PHYSICIANS

LEADERSHIP



Steven Schnur, MD
CEO – BOARD EXECUTIVE
DIRECTOR



Andy Jacobson
COO – BOARD CO-CHAIR

ADVISORY BOARD



Marc Auerbach

**LEGAL ADVISOR
HEALTHCARE LAW**



Marc Goldsand

**LEGAL ADVISOR
HEALTHCARE LAW**



Jenna Rasiff

**LEGAL ADVISOR
LABOR &
EMPLOYMENT**

ADVISORY BOARD



Perry Krichmar, MD

CHIEF MEDICAL ADVISOR



Kenneth Ratzan, MD

**INFECTIOUS DISEASE SPECIALIST
& ADVISOR**

CLIENTS



KING'S RIDGE
CHRISTIAN SCHOOL



WALNUT GROVE
CHRISTIAN SCHOOL



Carolina Christian Academy





WE WILL SUCCEED TOGETHER

TO LEARN MORE OR RECEIVE A PROPOSAL OF SERVICES,
PLEASE CALL MIKE ERSTLING AT 813-469-5326

"If everyone is moving forward together,
then success takes care of itself."

- Henry Ford